

Entocentric lenses up to 1.34" imager

vicotar[®]

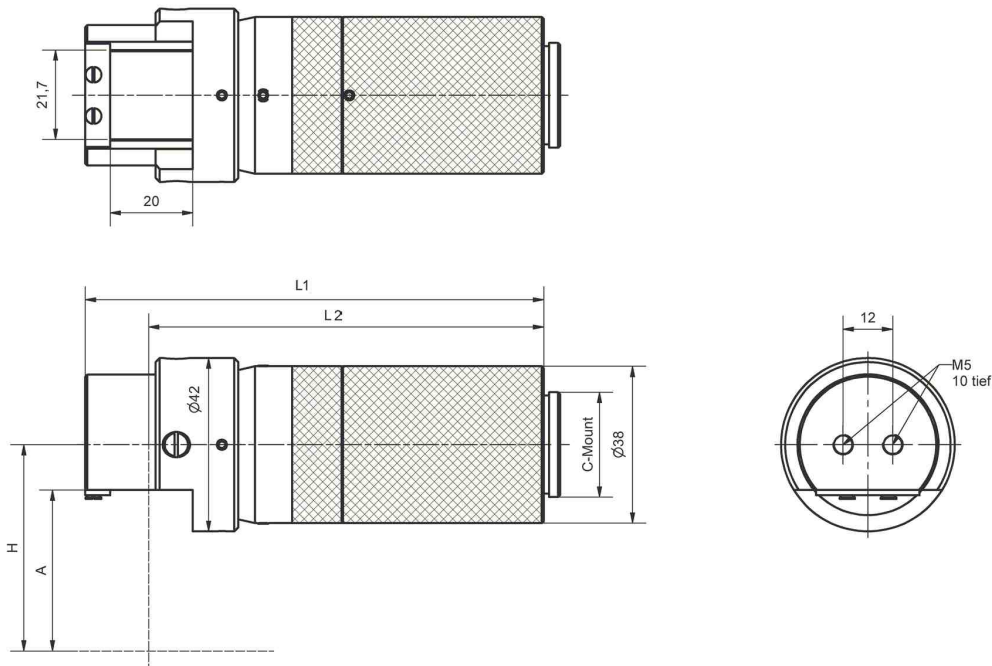
RWQ series, lenses with folded optical path

Product features

- Lenses which bend the optical path through a right angle
- Application for matrix and line cameras up to sensor diagonal/length 21.4 mm
- To used when the mounting space is restricted
- Low distortion
- Manual operated iris aperture with fixing
- Robust industrial design: dust-proof, shock-proof
- C-mount (thread connection)



Engineering drawing



Download Manual

Adobe PDF

Download CAD-File

.stp
.dxf
.dwg

**NEW
2007**

**Up to
1.34"
imager**

Properties

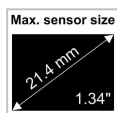
Optical properties

Spectral range 380...900nm / colour-corrected / fast lenses

Mechanical properties

Flange focal distance 17.53mm / max. diameter of lenses 42mm / two M5 mounting holes on the end face / camera side filter thread M20 x 0.5 / environmental temperature -10°C ... 50°C

Options



Entocentric lenses up to 1.34" imager

vicotar® RWQ series, lenses with folded optical path

Optical data

Name	Order no.	Lateral magnification	Image side aperture (adjustable)	Field of view for 1.34" sensor [mm ²]	Field of view for 1" sensor [mm ²]	Field of view for 3/8" sensor [mm ²]	Field of view for 1/2" sensor [mm ²]	Field of view for 1/3" sensor [mm ²]
RWQ 30-1,3	2-10-355	-1,3 : 1	0,044 ... 0,012	11,7 x 11,7	9,8 x 7,4	6,8 x 5,1	4,9 x 3,7	3,7 x 2,8
RWQ 30-1,0	2-10-356	-1 : 1	0,050 ... 0,014	15,2 x 15,2	12,8 x 12,8	8,8 x 6,6	6,4 x 4,8	4,8 x 3,6
RWQ 30-0,89	2-10-357	-1 : 1,12	0,054 ... 0,015	17,0 x 17,0	14,4 x 10,8	9,9 x 7,4	7,2 x 5,4	5,4 x 4,0
RWQ 30-0,67	2-10-358	-1 : 1,49	0,061 ... 0,017	22,6 x 22,6	19,1 x 14,3	13,1 x 9,9	9,6 x 7,2	7,2 x 5,4
RWQ 30-0,59	2-10-359	-1 : 1,69	0,064 ... 0,018	25,7 x 25,7	21,7 x 16,3	14,9 x 11,2	10,9 x 8,1	8,1 x 6,1
RWQ 30-0,42	2-10-360	-1 : 2,38	0,072 ... 0,020	36,1 x 36,1	30,5 x 22,9	21,0 x 15,7	15,2 x 11,4	11,4 x 8,6
RWQ 30-0,38	2-10-361	-1 : 2,63	0,074 ... 0,021	39,9 x 39,9	33,7 x 25,3	23,2 x 17,4	16,8 x 12,6	12,6 x 9,5
RWQ 50-0,37	2-10-362	-1 : 2,70	0,088 ... 0,009	41,0 x 41,0	34,6 x 26,0	23,8 x 17,8	17,3 x 13,0	13,0 x 9,7
RWQ 30-0,35	2-10-363	-1 : 2,86	0,083 ... 0,022	43,3 x 43,3	36,6 x 27,4	25,1 x 18,9	18,3 x 13,7	13,7 x 10,3
RWQ 30-0,24	2-10-364	-1 : 4,17	0,083 ... 0,024	63,2 x 63,2	55,3 x 40,0	36,7 x 27,5	26,7 x 20,0	20,0 x 15,0
RWQ 30-0,18	2-10-365	-1 : 5,56	0,087 ... 0,025	84,2 x 84,2	71,1 x 53,3	48,9 x 36,7	35,6 x 26,7	26,7 x 20,0
RWQ 50-0,17	2-10-366	-1 : 5,88	0,094 ... 0,010	89,2 x 89,2	75,3 x 56,5	51,8 x 38,8	37,7 x 28,2	28,2 x 21,2
RWQ 50-0,12	2-10-367	-1 : 8,33	0,099 ... 0,010	126 x 126	107 x 80,0	73,3 x 55,0	53,3 x 40,0	40,0 x 30,0
RWQ 30-0,067	2-10-368	-1 : 14,93	0,097 ... 0,028	226 x 226	191 x 143	131 x 99	95,5 x 71,6	71,6 x 53,7

Size of imaging device:

1.34" - 15.2 x 15.2 mm² | 1" - 12.8 x 9.6 mm² | 3/8" - 8.8 x 6.6 mm² | 1/2" - 6.4 x 4.8 mm² | 1/3" - 4.8 x 3.6 mm²

Mechanical data

Name	Order no.	Max. object field diameter	Working distance	Total length L1	Length L2	Height of opt. axis H	Weight
RWQ 30-1,3	2-10-355	16,5 mm	17 mm	112 mm	96 mm	29 mm	270 g
RWQ 30-1,0	2-10-356	11 mm	25 mm	102 mm	86 mm	37 mm	250 g
RWQ 30-0,89	2-10-357	24,1 mm	29 mm	99 mm	83 mm	41 mm	230 g
RWQ 30-0,67	2-10-358	32,0 mm	41 mm	92 mm	76 mm	53 mm	200 g
RWQ 30-0,59	2-10-359	36,3 mm	47 mm	89 mm	73 mm	59 mm	190 g
RWQ 30-0,42	2-10-360	51,1 mm	67 mm	84 mm	68 mm	79 mm	170 g
RWQ 30-0,38	2-10-361	56,4 mm	77 mm	83 mm	67 mm	89 mm	160 g
RWQ 50-0,37	2-10-362	57,9 mm	157 mm	111 mm	95 mm	169 mm	120 g
RWQ 30-0,35	2-10-363	61,3 mm	83 mm	82 mm	66 mm	95 mm	150 g
RWQ 30-0,24	2-10-364	89,3 mm	122 mm	79 mm	63 mm	134 mm	130 g
RWQ 30-0,18	2-10-365	119 mm	170 mm	77 mm	61 mm	184 mm	120 g
RWQ 50-0,17	2-10-366	126 mm	310 mm	101 mm	86 mm	322 mm	110g
RWQ 50-0,12	2-10-367	179 mm	470 mm	99 mm	83 mm	472 mm	100 g
RWQ 30-0,067	2-10-368	320 mm	450 mm	73 mm	57 mm	462 mm	100 g

Entocentric lenses up to 1.34" imager

vicotar®

RWQ series, lenses with folded optical path

Important advice

Care instruction

Clean easily dirty lens with an optics brush or cleaned air. Adherent contamination can be removed by using an optical cleaning tissue. Please use only alcohol as a solvent, do not use acetone or other chemicals.

Accessories

Order no.	Name	Description
2-91-131	IR M20,5 x 0,5	daylight suppression filter for telecentric lens-systems
2-91-151	NF4 M20,5 x 0,5	neutral density filter, 4 x for telecentric lens-systems
2-91-171	NF1000 M20,5 x 0,5	neutral density filter, 1000 x for telecentric lens-systems
2-91-259	RF M20,5 x 0,5	red filter

Intended use for accessories

RWO lens with filter

