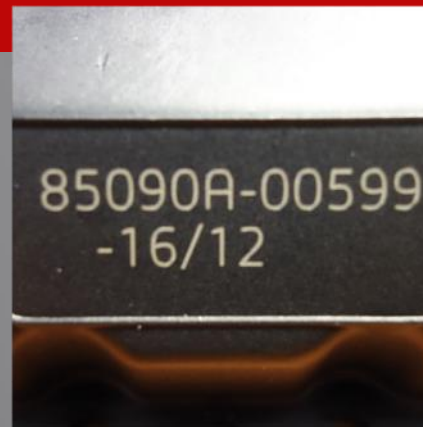




Mark today, identify tomorrow

sic-marking.com

A WORLDWIDE LEADER IN MARKING & TRACEABILITY SOLUTIONS



195, rue des Vergers – ZAC Bel Air – 69480 Pommiers, France / Tel: 00 33 4.72.54.80.00 / email: info@sic-marking.com

CUSTOMER'S NEED

Trace the use of each instrument, number of repairs, cleaning, in order to know when it should be thrown away.



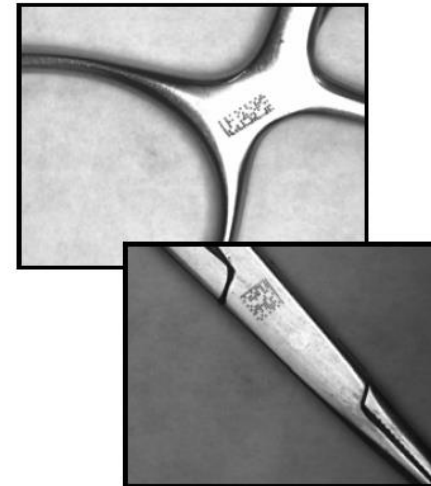
DOT PEEN MARKING

on medical instrumentation

1. Configuration display screen



2. Data Matrix DPM



3. Code reading and checking, data analysis.



[Application Sheet A 65R01US](#)

LASER MARKING

Medical devices

The customer wants to mark product references and serial numbers with alphanumeric and datamatrix codes on various medical devices intended for the treatment of respiratory diseases. Customer's parts can be steel or plastic.



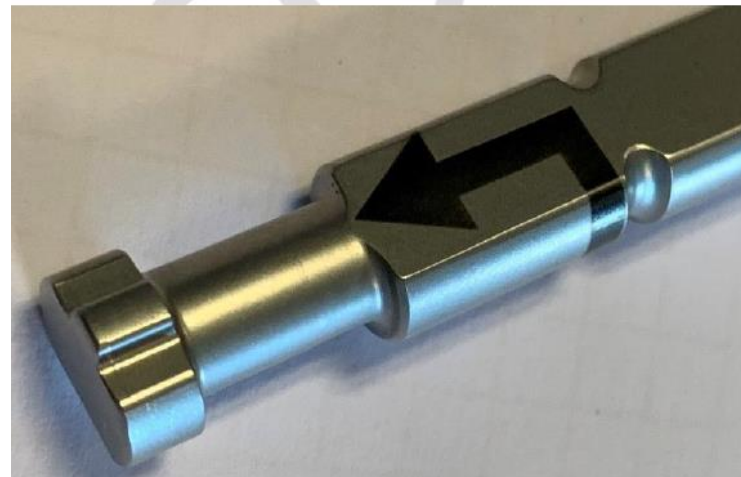
LASER MARKING

on surgical Tool

Make a contrasting marking on surgical tool.

The part will passivate after marking laser.

The geometry of the part (cylinder with a flat) , ask for a combined use between 3D module and axis D (rotary).

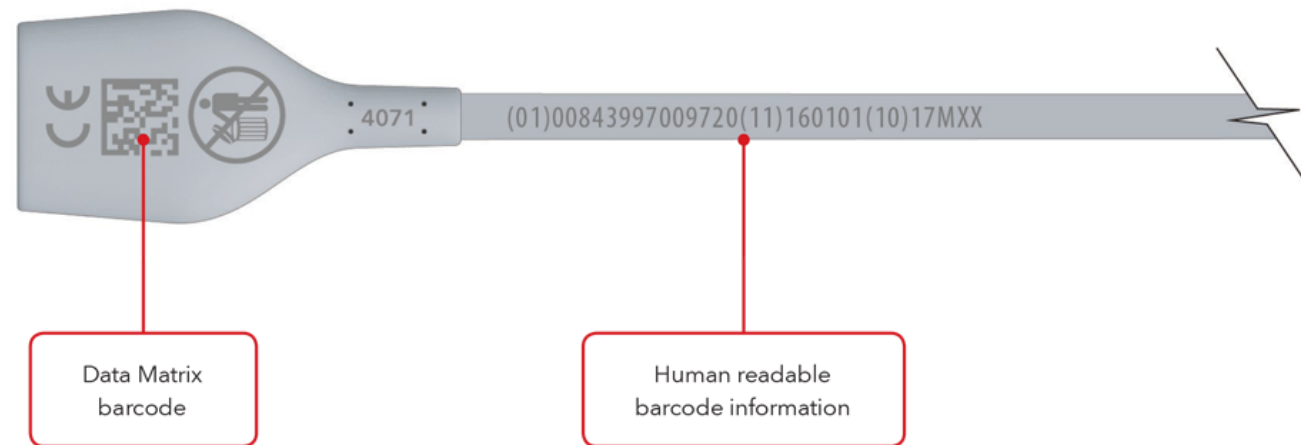


SIC Marking's laser technology can help with all UDI requirements whether it is human readable text, a 2D Data Matrix, or barcode.

https://www.sic-marking.com/?_ga=2.193093614.271120675.1593762018-2065445694.1580475724&_gac=1.36966164.1593762018.EAlaIQobChMIkZlMqW6gIVS9iyCh03EQYgEAAYASAAEgLFMfD_BwE

UDI –GS1 Capabilities

RD Patient Cable



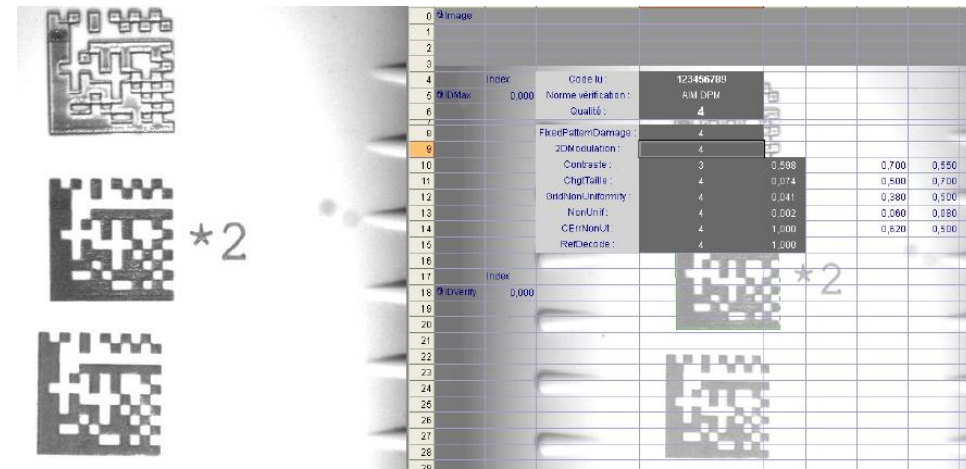
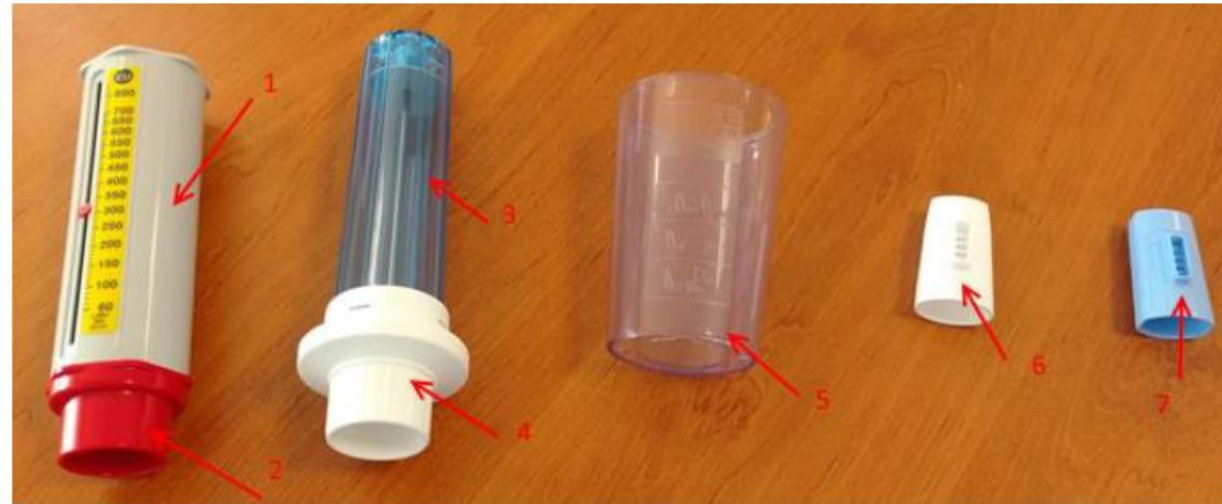
July 15 2020 SIC USA in GS1 database for marking systems



LASER MARKING

Medical
various
medical parts
in various raw
materials

Mark a datamatrix on the following samples, no marking cycle time is specified.
Perform reading test and provide the grade.



LASER MARKING

Medical
various parts
in various
material

CR CR0 brut



CR CR0 poli



Titane anodisé



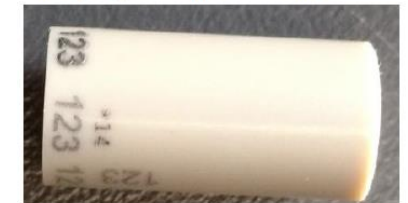
Inox 316LVM brut tribo

Marquages demandés : blanc et noir



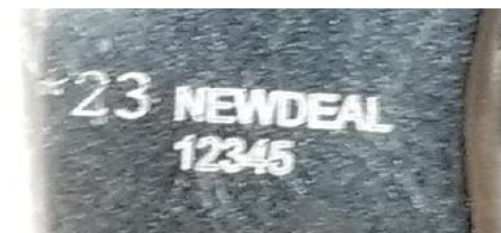
PEEK

Marquage demandé : noir



Inox 316LVM Poli

Marquages demandés : blanc et noir



POMC manches

Marquages demandés : blanc et noir



LASER MARKING

Medical
various parts
in various
material

Titane TA6V brut

Marquage demandé : non indiqué



LASER MARKING

Medical
various parts
in various
material

Test1 : Titane



Test 2 : Titane



Test 3 : 316LVM



Test 4&5 : Inox Z30C13



Test 6 : Inox 455



Test 7 CoCr



Test 8: Peek



Test 9 : Plastique (POM ?)



Test 10 : Plastique (POM ?)



LASER MARKING

Medical
various parts
in various
material

- Céramique zircon



- Pièces Radel



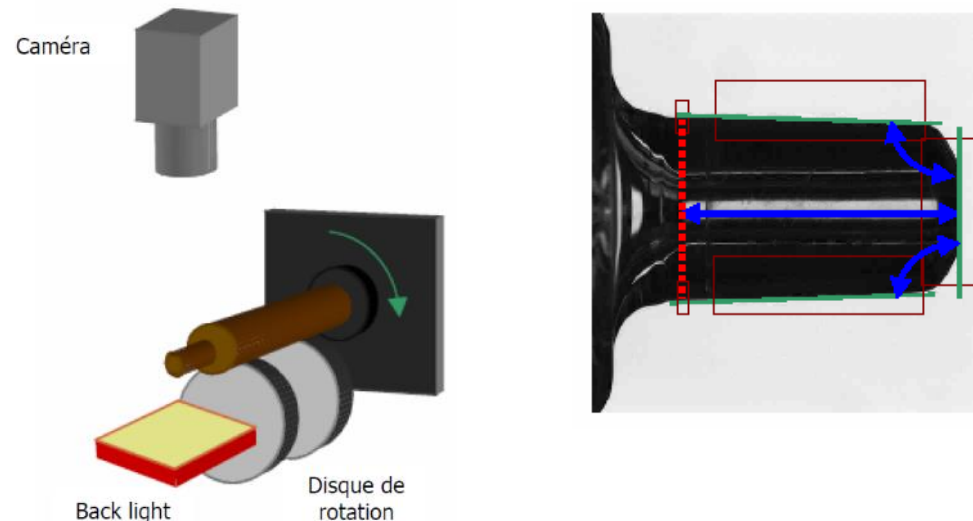
VISIONSCAPE SYSTEM on Syringe

CUSTOMER PROBLEM:

A syringe manufacturer wants to measure certain critical points in the manufacture of these products. The inspections should define between another angle of the tapered tip of the syringe, the position of the attention of the syringe.

SOLUTION:

A Visionscape system associated with a high definition camera (1000 x 1000 pixels) and Backlight lighting has set up to meet all of the syringe inspection needs. In addition, for this application, the syringe is placed on 2 discs allowing its rotation, according to the speed of 15 revolutions / min. 8 inspections are carried out in 0.9s with an accuracy of 0.001 mm.



VISIONSCAPE SYSTEM

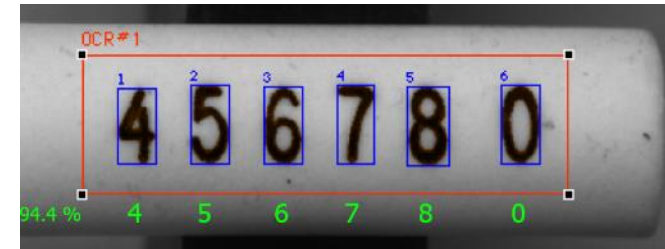
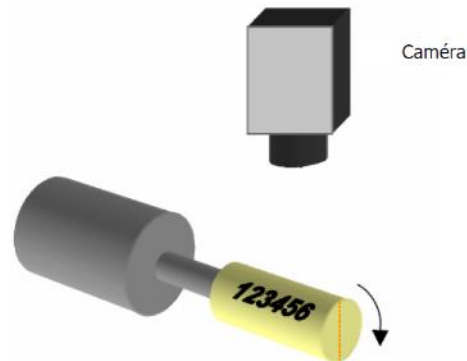
on pharmaceutical capsules

CUSTOMER PROBLEM:

A pharmaceutical company needs a link to a database for the identification of drug samples drugs in his research laboratory. The chemical composition of the drugs is determined and then inserted in numbered capsules. Identification must be made after packaging to provide information the laboratory database, the capsule being positioned randomly.

SOLUTION PROVIDED:

The proposed solution is a Visionscape system using the OCR replay tool. The capsule being positioned randomly, it is clamped in a rotary system allowing the rotation of the part. The marking is identified with respect to the end of the capsule and to the rotation of the part. As soon as the writing is located, the software searches for the end of the capsule to correctly orient the text. Once this is done, the reading is carried out and the database is filled. The whole process is completed in 42 ms.



SIC Marking France Global Headquarters

195 Rue des Vergers
69480 Pommiers
France
Tel: +33 (0) 472 54 80 00
info@sic-marking.com

SIC Marking Italy

Via Collamarini 9
40138 Bologna
Italy
Tel: +39 (0) 51 6027811

SIC Marking Germany

Am Bruch 21 - 23
42857 Remscheid
Germany
Tel: +49 (0) 2191 46240-0

SIC Marking UK

B1 Harris Road,
Wedgnock Industrial Estate,
Warwick, CV34 5JU
England
Tel: +44 (0) 1926 830372

SIC Marking USA

137 Delta Drive
Pittsburgh, PA 15238
USA
Tel: + 1 (877) 742 9133
Offices also in Tempe, AZ.

SIC Marking Canada

35-2, rue De Lauzon
Boucherville Qc J4B 1E7
Canada
Tel: + 1 450 449 9133

SIC Marking Mexico

Canada #129
Parque Industrial Unidad Nacional
Santa Catarina, N.L CP 66350
Mexico
Tel: +52 (81) 8676 3383
Offices also in Mexico City.

SIC Marking China

No. 601, No. 4 Building, No. 258
Jinzang Rd. Shanghai
Shanghai 201206
China
Tel: +86 (0) 21 6164 5600
*Offices also in Haerbin, Beijing,
Wuhan, Chongqing and Guangzhou.*

SIC Marking Korea

Office # 707, Banpo Technopia,
186, Galmachi-ro, Jungwon-gu, 13230
Seongnam-si, Gyeonggi-do, South Korea
Tel: +82 31 731 8400



**THANK YOU FOR
YOUR ATTENTION.**



**Mark today, identify
tomorrow**